

Fiol

UPPSTARTEN

Jonny Johansson

2020/2021



UPPSTARTEN

1. UPPSTARTEN
2. MORGONDAGG
3. SKIMMER
4. COWBOY STARS
5. KVÄLLSLJUS
6. BALLONGFÄRD
7. EKLIPS
8. ARCOBALENO
9. SPEKTRUM
10. MINISNOA
11. CANON IN D
12. PATRICKS REEL
13. I BETLEHEM
14. TOMTEFAR
15. BJÄLLERKLANG

Fiol

Uppstarten

Funk

Jonny Johansson

Empty guitar staff with strings E, A, D, G labeled on the left.

A

First measure of section A: A square symbol above the first line, followed by four circles (0) on the first line.

Second measure of section A: A square symbol above the second line.

B

First measure of section B: A square symbol above the first line, followed by six circles (0) on the first line.

Second measure of section B: A square symbol above the second line.

Third measure of section B: A square symbol above the second line.

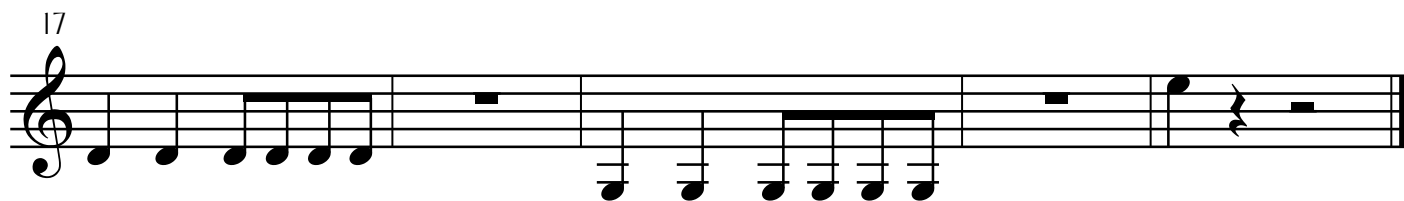
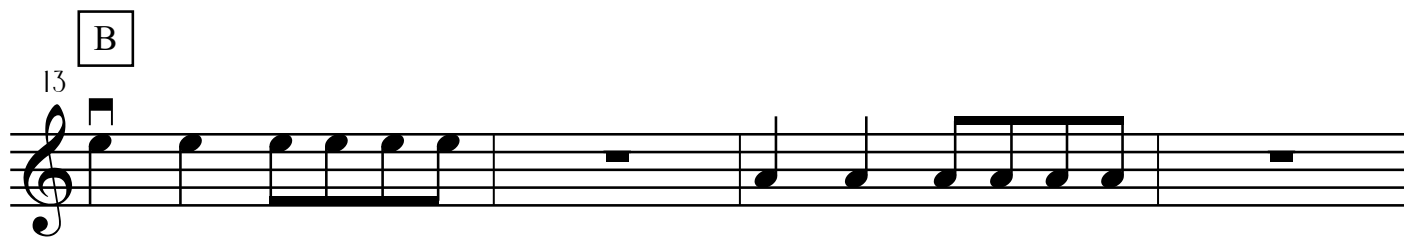
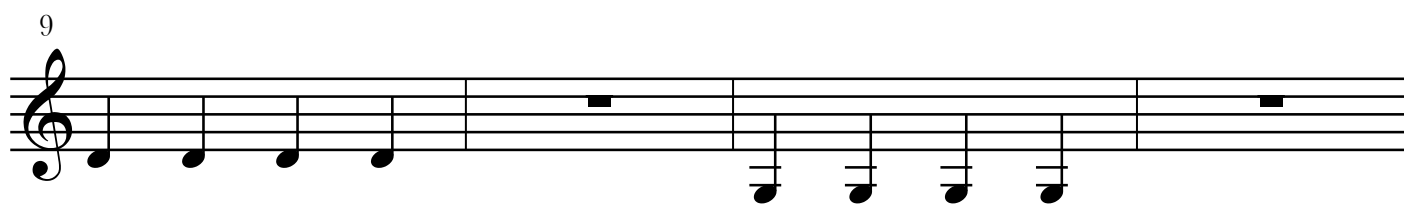
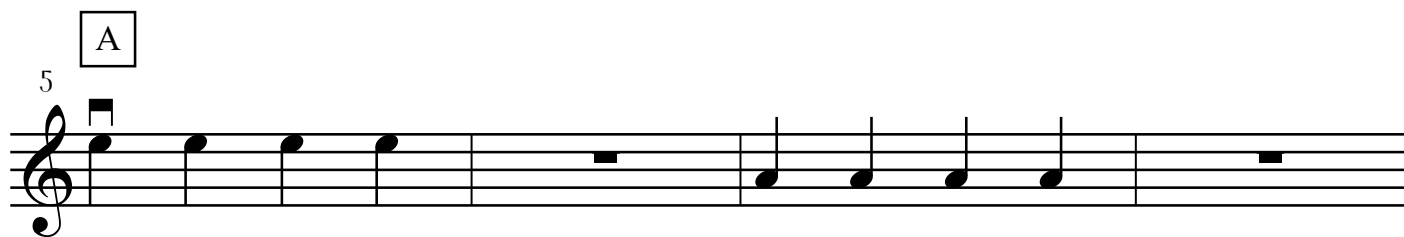
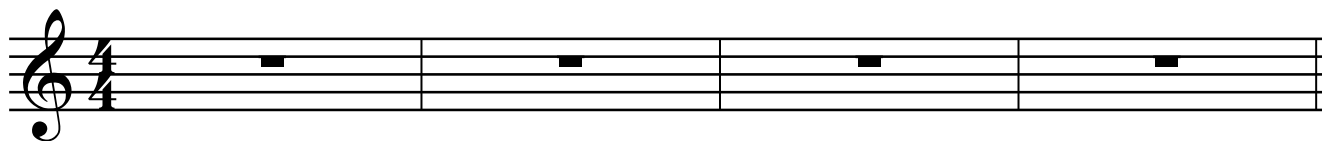
Fourth measure of section B: A square symbol above the second line, a double bar line, and a fermata symbol over a circle (0) on the first line.

Fiol

UPPSTARTEN

Funk

Jonny Johansson



Fiol

MORGONDAGG

Ballad

Jonny Johansson

Four-measure sequence on a four-stringed instrument (E, A, D, G).
Measure 1: Square bar on A string, 0 on G string.
Measure 2: Double bar on G string.
Measure 3: 0 on G string.
Measure 4: Curved arrow on A string, 0 on G string.

A

Section A: Four-measure sequence on a four-stringed instrument.
Measure 1: Square bar on A string, 0 on G string.
Measure 2: 0 on G string, 0 on A string, square bar on A string.
Measure 3: 0 on G string, 0 on A string, 0 on D string, 0 on E string.
Measure 4: 0 on G string, 0 on A string, square bar on A string.

B

Section B: Four-measure sequence on a four-stringed instrument.
Measure 1: 0 on G string, 0 on A string, 0 on D string, 0 on E string.
Measure 2: 0 on G string, 0 on A string, square bar on A string.
Measure 3: 0 on G string, 0 on A string, 0 on D string, 0 on E string.
Measure 4: 0 on G string, 0 on A string, square bar on A string, dot on E string, curved arrow on E string.

Fiol

MORGONDAGG

Ballad

Jonny Johansson

Musical notation for the first system, measures 1-4. The staff is in treble clef with a key signature of one sharp (F#) and a 4/4 time signature. Measure 1 contains a whole rest. Measure 2 contains a whole note chord consisting of a bass line (G2) and a treble line (F#4). Measure 3 contains a whole note chord consisting of a bass line (G2) and a treble line (A4). Measure 4 contains a whole rest. Above the staff, there are three symbols: a square with a vertical line, a double bar with a vertical line, and a curved arrow pointing left.

Musical notation for the second system, measures 5-8. The staff is in treble clef with a key signature of one sharp (F#). Measure 5 starts with a repeat sign and contains a whole note chord (G2, F#4) followed by a quarter note G3. Measures 6-7 contain quarter notes: G3, A3, B3, C4, D4, E4, F#4, G4. Measure 8 contains a quarter note G4 followed by a whole rest.

Musical notation for the third system, measures 9-12. The staff is in treble clef with a key signature of one sharp (F#). Measure 9 starts with a repeat sign and contains a whole note chord (G2, F#4) followed by a quarter note G3. Measures 10-11 contain quarter notes: G3, A3, B3, C4, D4, E4, F#4, G4. Measure 12 contains a quarter note G4 followed by a whole rest. The system ends with a double bar line and a fermata over the final note.

Fiol

SKIMMER

Ballad

Jonny Johansson

A



B



C

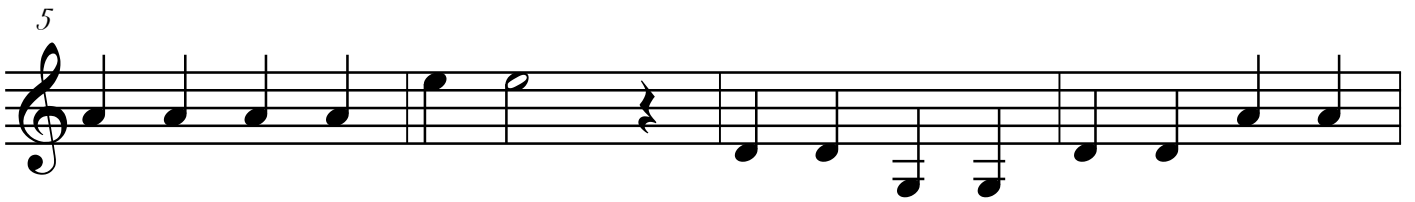
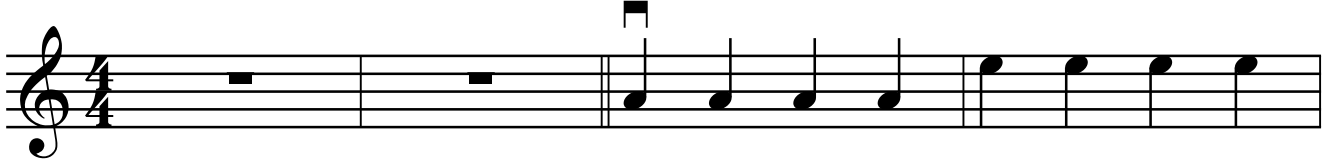
Fiol

SKIMMER

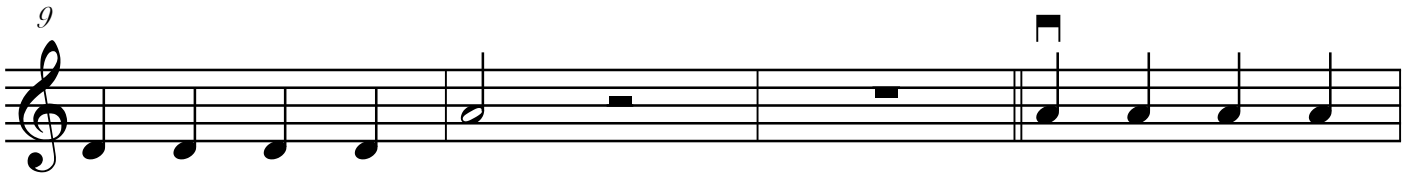
Ballad

Jonny Johansson

A



B



C



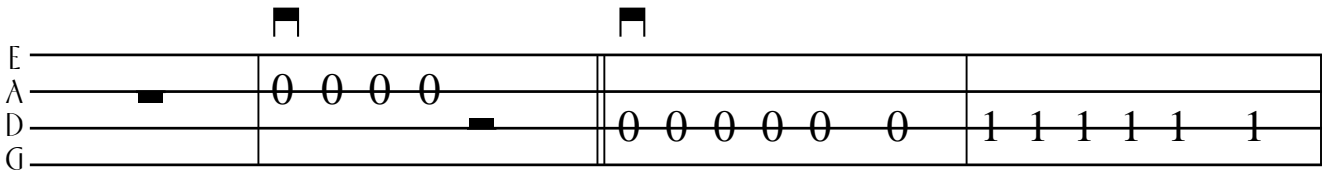
Fiol

COWBOY STARS

Charleston Jazz

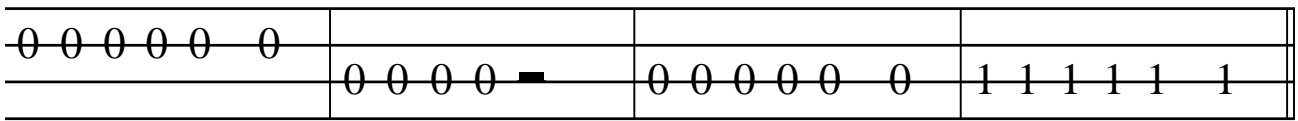
Jonny Johansson

A



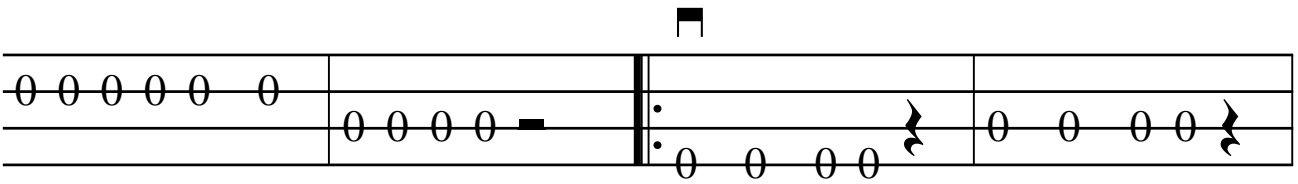
Musical notation for section A, consisting of four measures. The first measure has a bar line on the A string and a bar line on the D string. The second measure has a bar line on the D string. The third measure has a bar line on the D string. The fourth measure has a bar line on the D string. The notes are: Measure 1: A string (bar line), D string (bar line), D, D, D, D, D, D. Measure 2: D, D, D, D, D, D, D, D. Measure 3: D, D, D, D, D, D, D, D. Measure 4: D, D, D, D, D, D, D, D.

B



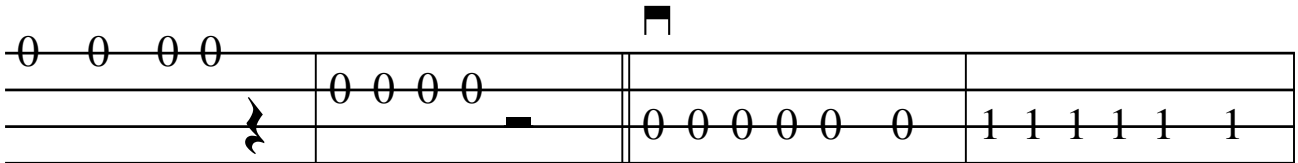
Musical notation for section B, consisting of four measures. The first measure has a bar line on the D string. The second measure has a bar line on the D string. The third measure has a bar line on the D string. The fourth measure has a bar line on the D string. The notes are: Measure 1: D, D, D, D, D, D, D, D. Measure 2: D, D, D, D, D, D, D, D. Measure 3: D, D, D, D, D, D, D, D. Measure 4: D, D, D, D, D, D, D, D.

C

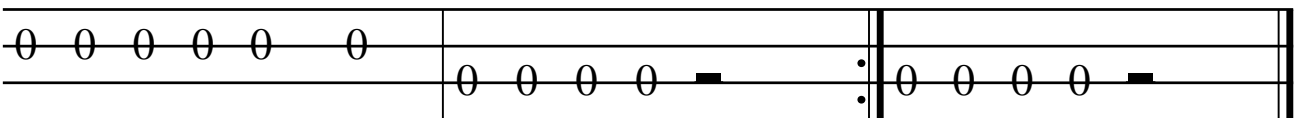


Musical notation for section C, consisting of four measures. The first measure has a bar line on the D string. The second measure has a bar line on the D string. The third measure has a bar line on the D string. The fourth measure has a bar line on the D string. The notes are: Measure 1: D, D, D, D, D, D, D, D. Measure 2: D, D, D, D, D, D, D, D. Measure 3: D, D, D, D, D, D, D, D. Measure 4: D, D, D, D, D, D, D, D.

D



Musical notation for section D, consisting of four measures. The first measure has a bar line on the D string. The second measure has a bar line on the D string. The third measure has a bar line on the D string. The fourth measure has a bar line on the D string. The notes are: Measure 1: D, D, D, D, D, D, D, D. Measure 2: D, D, D, D, D, D, D, D. Measure 3: D, D, D, D, D, D, D, D. Measure 4: D, D, D, D, D, D, D, D.



Musical notation for section E, consisting of four measures. The first measure has a bar line on the D string. The second measure has a bar line on the D string. The third measure has a bar line on the D string. The fourth measure has a bar line on the D string. The notes are: Measure 1: D, D, D, D, D, D, D, D. Measure 2: D, D, D, D, D, D, D, D. Measure 3: D, D, D, D, D, D, D, D. Measure 4: D, D, D, D, D, D, D, D.

Fiol

COWBOY STARS

Charleston Jazz

Jonny Johansson

1

A

5

B

9

C

13

D

17

Fiol

KVÄLLSLJUS

Adagio i klassisk stil

Jonny Johansson

■ ↻

E
A
D
G

A

■

0 0 1 1 0 0 0 0 0 1 1 2 ■

0 0 1 1 0 0 0 0 0 1 1 0 ■

B

■

0 0 0 0 0 0 0 0 0 1 1 2 ■

C

0 0 0 0 0 0 0 0 1 1 0

Fiol

BALLONGFÄRD

Pop

Jonny Johansson

Musical notation for the first staff, showing a sequence of notes and rests on the D string. The notes are on the second line (D4). Above the staff, there are square flags and curved arrows indicating articulation. The sequence is: a square flag, a curved arrow pointing down, a square flag, a curved arrow pointing up, a square flag, a curved arrow pointing down, a square flag, and a curved arrow pointing up. The notes are: 0, 0, 0, 0, 0, 0, 0, 0.

A

Musical notation for section A, first staff. Above the staff is a square flag. The notes are: 0 0 0 0 | 0 0 0 0 | 0 0 0 0 | 0 0 0 0. A square flag is placed above the final note of the fourth measure.

Musical notation for section A, second staff. The notes are: 0 0 0 0 | 0 0 0 0 | 0 0 0 0 | 0 0 0 0. A square flag is placed above the final note of the fourth measure.

B

Musical notation for section B, first staff. Above the staff is a square flag. The notes are: 3 3 3 3 | 2 2 2 2 | 1 1 1 1 | 0 0 0 0. Each note has a fermata. A square flag is placed above the final note of the fourth measure.

Musical notation for section B, second staff. The notes are: 3 3 3 3 | 2 2 2 2 | 1 1 1 1 | 0 0 0 0. Each note has a fermata. A square flag is placed above the final note of the fourth measure. The staff ends with a double bar line and repeat dots.

Fiol

EKLIPS

Pop

Jonny Johansson

A



E
A
D
G

B



C



D



E

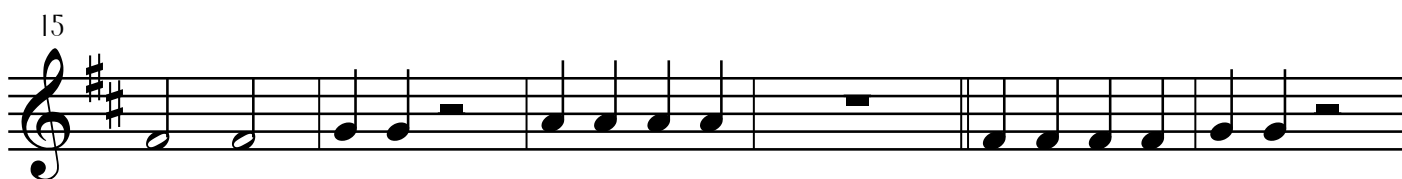
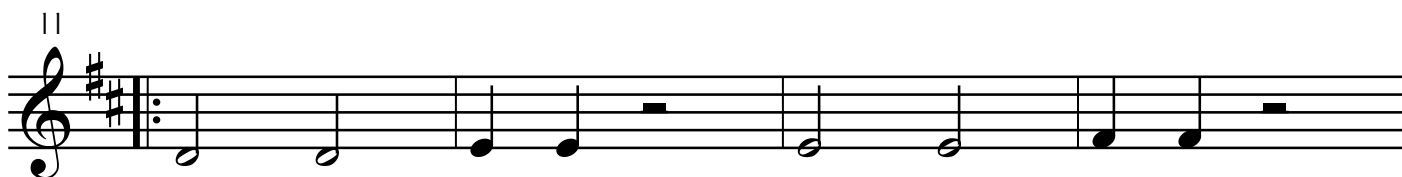
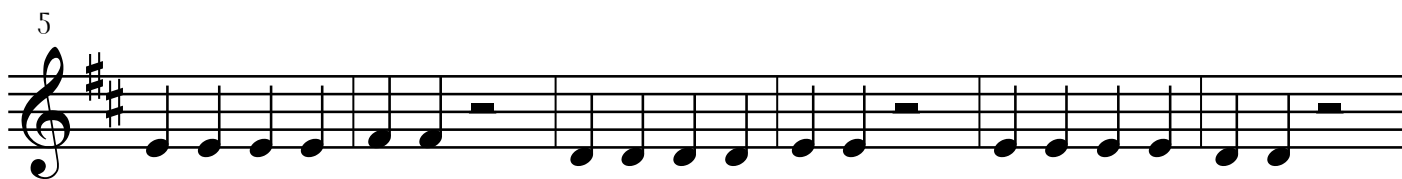
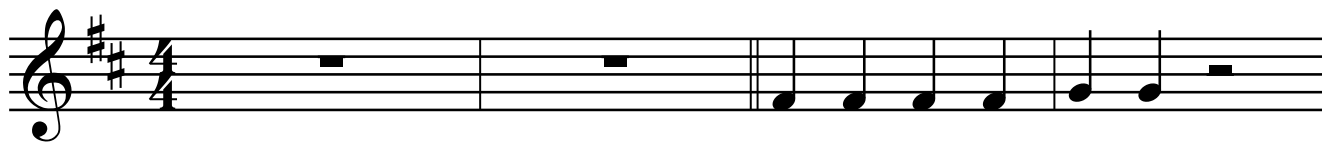


Fiol

ARCOBALENO

Klassiskt

Jonny Johansson



Fiol

SPEKTRUM

Pop

Jonny Johansson

A

E
A
D
G

B

C

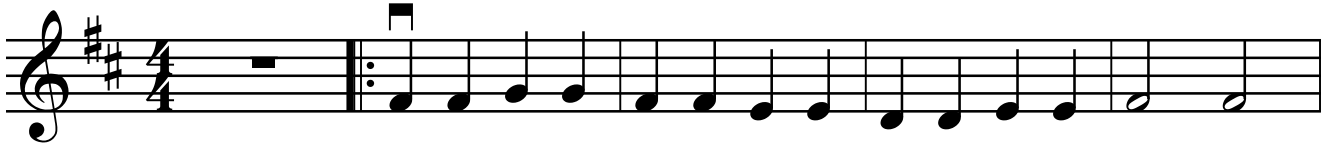
Fiol

SPEKTRUM

Pop

Jonny Johansson

A



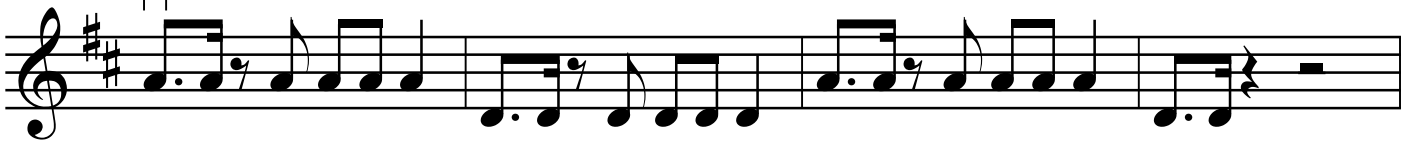
Första gången 8 takter långsamt

6



B

11

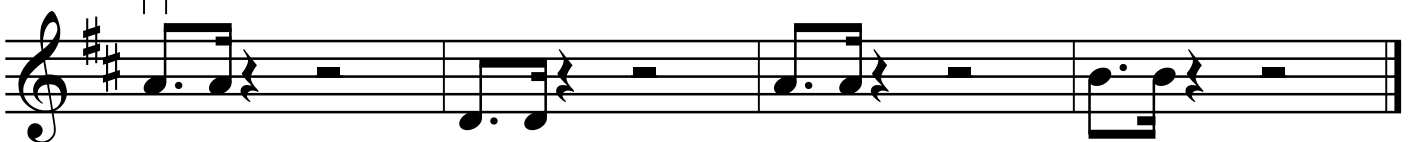


15



C

19



Fiol

MINISNOA



E
A
D
G

0 0

0 0



0 0

0 0

Fiol

CANON IN D

Johann Pachelbel
Arr: Jonny Johansson

pizz.

Musical notation for the pizzicato section. It consists of two staves, E (top) and G (bottom). The first staff has notes: G4 (quarter), A4 (quarter), B4 (quarter), C5 (quarter), D5 (quarter), E5 (quarter), F5 (quarter), G5 (quarter). The second staff has notes: G3 (quarter), F3 (quarter), E3 (quarter), D3 (quarter), C3 (quarter), B2 (quarter), A2 (quarter), G2 (quarter). The notation includes a repeat sign at the beginning and end of the phrase.

Repris 7x

Two empty musical staves, one above the other, with a vertical bar line in the middle of each staff.

arco



Musical notation for the arco section. It consists of two staves, E (top) and G (bottom). The first staff has notes: G4 (quarter), A4 (quarter), B4 (quarter), C5 (quarter), D5 (quarter), E5 (quarter), F5 (quarter), G5 (quarter). The second staff has notes: G3 (quarter), F3 (quarter), E3 (quarter), D3 (quarter), C3 (quarter), B2 (quarter), A2 (quarter), G2 (quarter). The notation includes a repeat sign at the beginning and end of the phrase.

Repris 10x

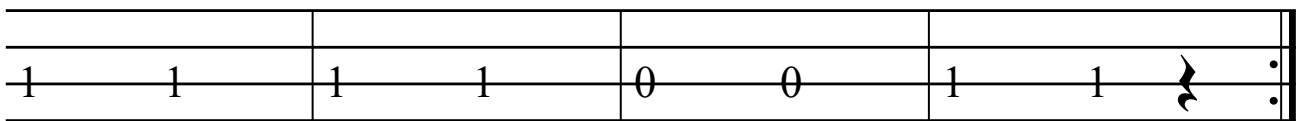
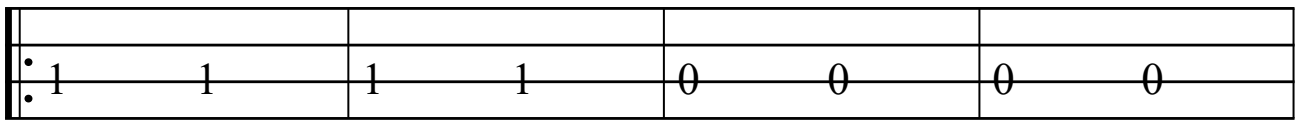
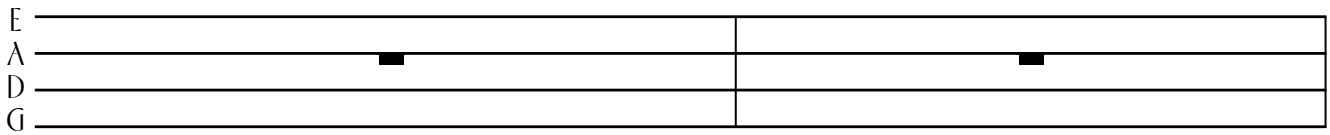
Musical notation for a single note. It consists of two staves, E (top) and G (bottom). The first staff has a note G4 (quarter) with a fermata above it. The second staff has a note G3 (quarter). The notation ends with a double bar line.

Fiol

PATRICKS REEL

Irländsk folkmusik

Trad



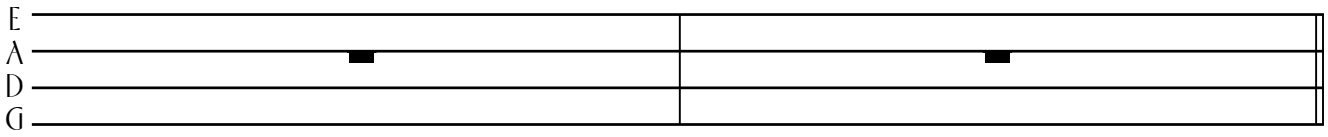
Spelas 5 gånger

Fiol

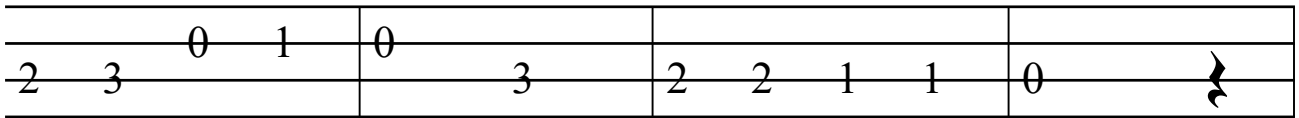
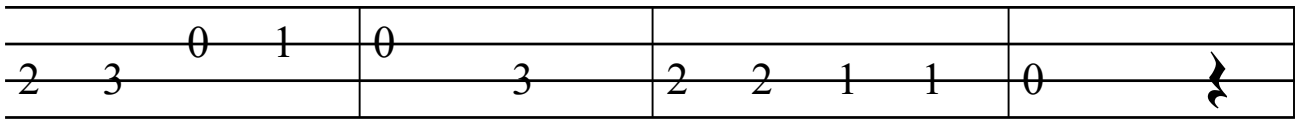
I BETLEHEM

Julsång

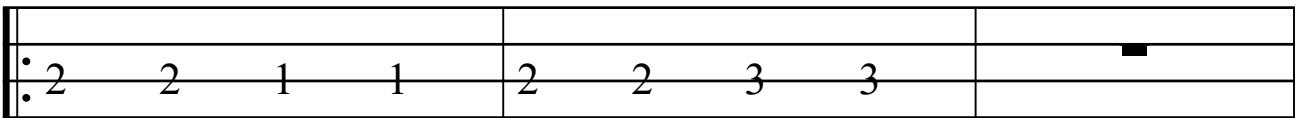
Folkvisa från Polen
Arr: Jonny Johansson



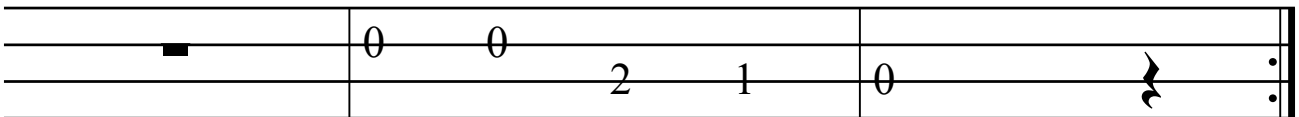
A



B



C



Fiol

TOMTEFAR

Julsång

Trad.

Arr: Jonny Johansson

Musical staff for the first section, featuring a four-measure sequence. The notes are: 0, 0, 2, 2, 1, 1, 0. There are two black squares on the first and second measures.

pizz.

Musical staff for the second section, featuring a four-measure sequence. The notes are: 0, 0, 2, 2, 1, 1, 0. There are two black squares on the third and fourth measures.

A



Musical staff for section A, featuring a four-measure sequence. The notes are: 0, 0, 2, 2, 1, 1, 0, 0, 0, 2, 2, 1, 1, 0.

arco

B



Musical staff for section B, featuring a four-measure sequence. The notes are: 0, 0, 1, 1, 2, 2, 1, 0, 0, 1, 1, 2, 2, 1.

C



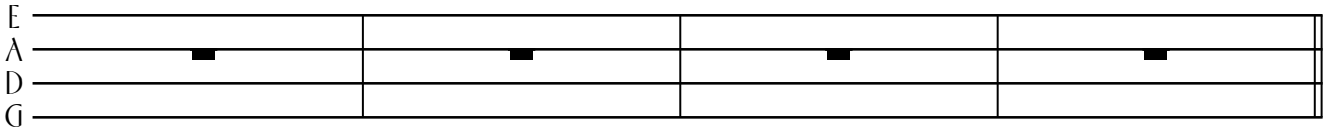
Musical staff for section C, featuring a four-measure sequence. The notes are: 0, 0, 2, 2, 1, 1, 0, 0, 0, 2, 2, 1, 1, 0.

Fiol

BJÄLLERKLING

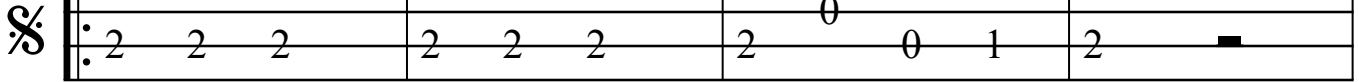
Julsång

J. S. Pierpont
Arr: Jonny Johansson



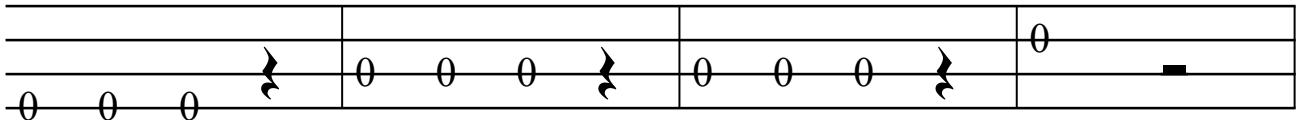
Empty staff with labels E, A, D, G on the left side.

A



Musical staff with notes and fingerings: 2 2 2 | 2 2 2 | 2 0 0 1 | 2

B



Musical staff with notes and slurs: 0 0 0 | 0 0 0 | 0 0 0 | 0

C

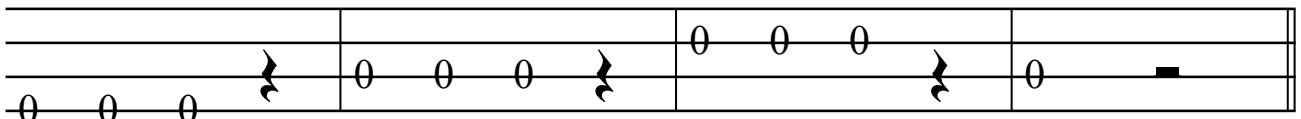


Musical staff with notes and fingerings: 2 2 2 | 2 2 2 | 2 0 0 1 | 2

D

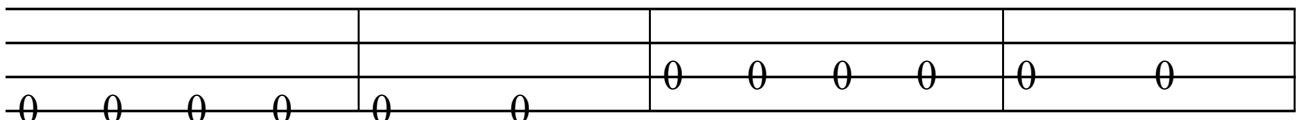


Fine



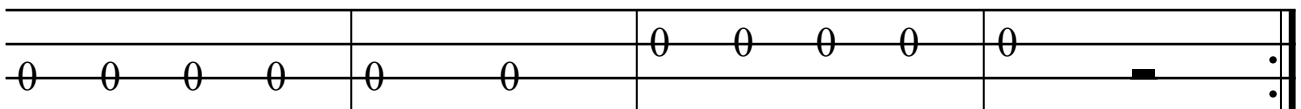
Musical staff with notes and slurs: 0 0 0 | 0 0 0 | 0 0 0 | 0

E



Musical staff with notes: 0 0 0 0 | 0 0 | 0 0 0 0 | 0 0

F



Musical staff with notes and slurs: 0 0 0 0 | 0 0 | 0 0 0 0 | 0

D.S. al Fine

